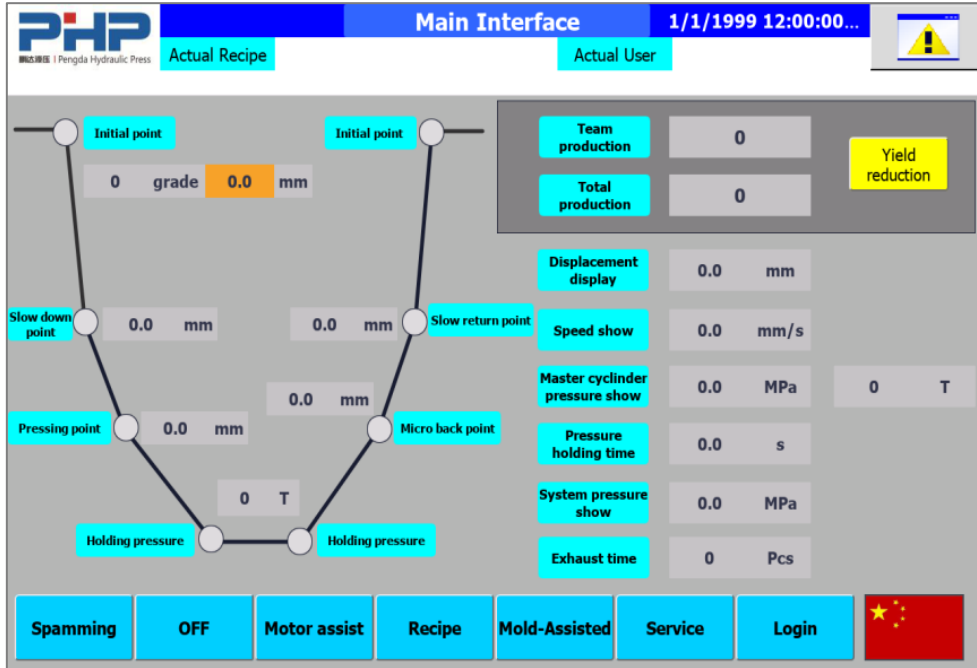


Introduction of Standard Touch Screen

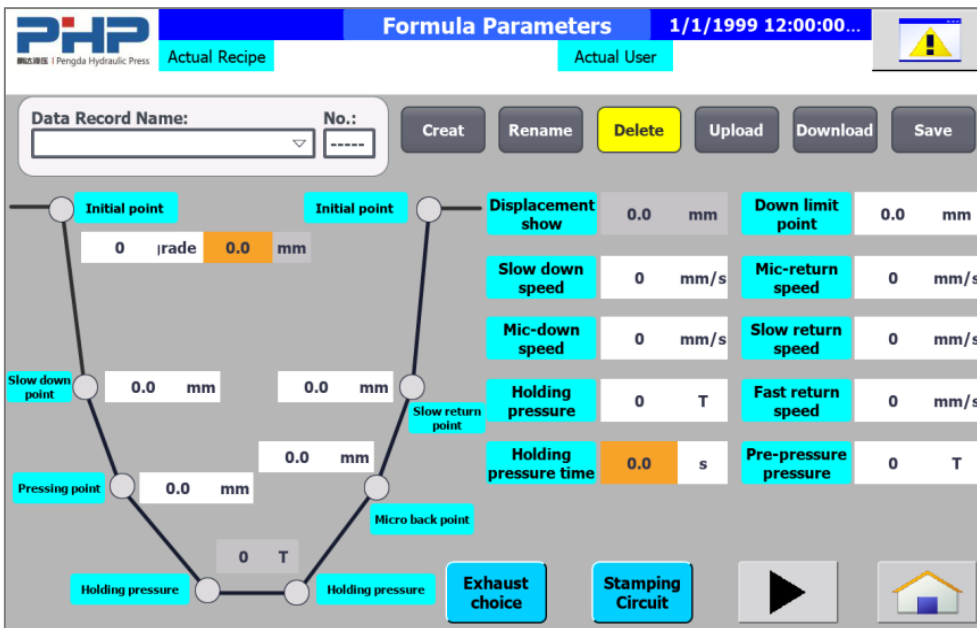
✧ Main Interface

The position and pressure values will be displayed visually during the pressing process



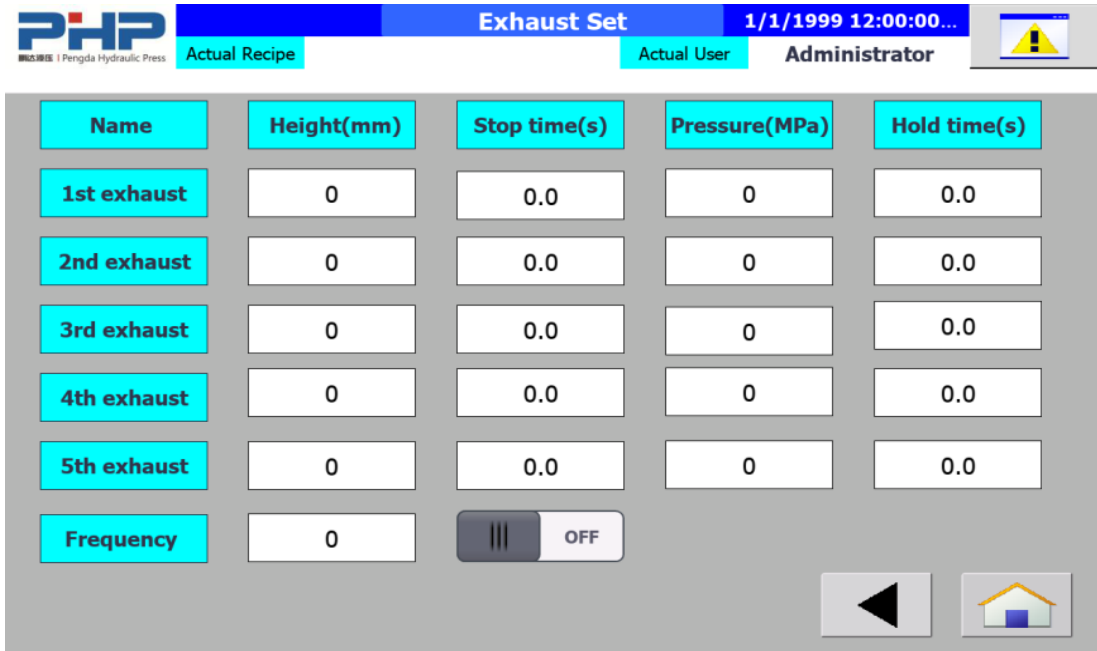
✧ Formula Parameters Interface

The parameter formula can be set, saved and used in the interface.



✧ Exhaust Set Interface

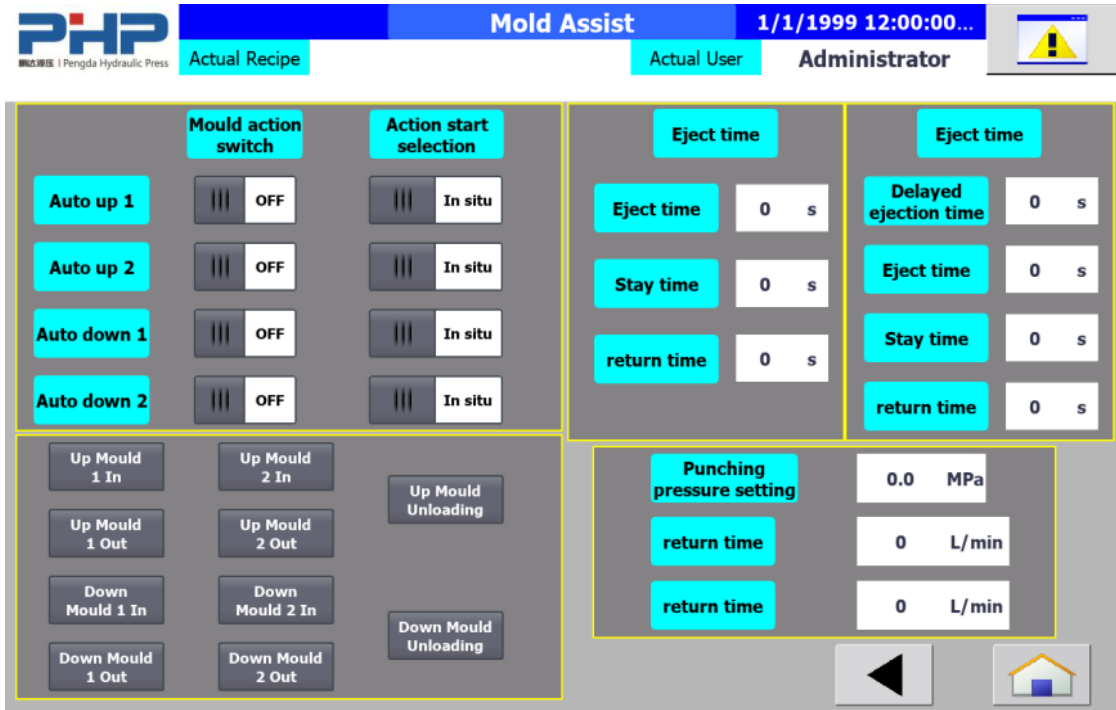
The exhaust function can be activated in this interface and the parameters can be set here.



Name	Height(mm)	Stop time(s)	Pressure(MPa)	Hold time(s)
1st exhaust	0	0.0	0	0.0
2nd exhaust	0	0.0	0	0.0
3rd exhaust	0	0.0	0	0.0
4th exhaust	0	0.0	0	0.0
5th exhaust	0	0.0	0	0.0
Frequency	0	OFF		

✧ Mold Action Interface


The actions of standby oil pipes can be set hereto meet the requirements of clients



✧ Input/Output Signal Interface

PLC signal conditions can be seen through the two interfaces to confirm whether the press is used normally

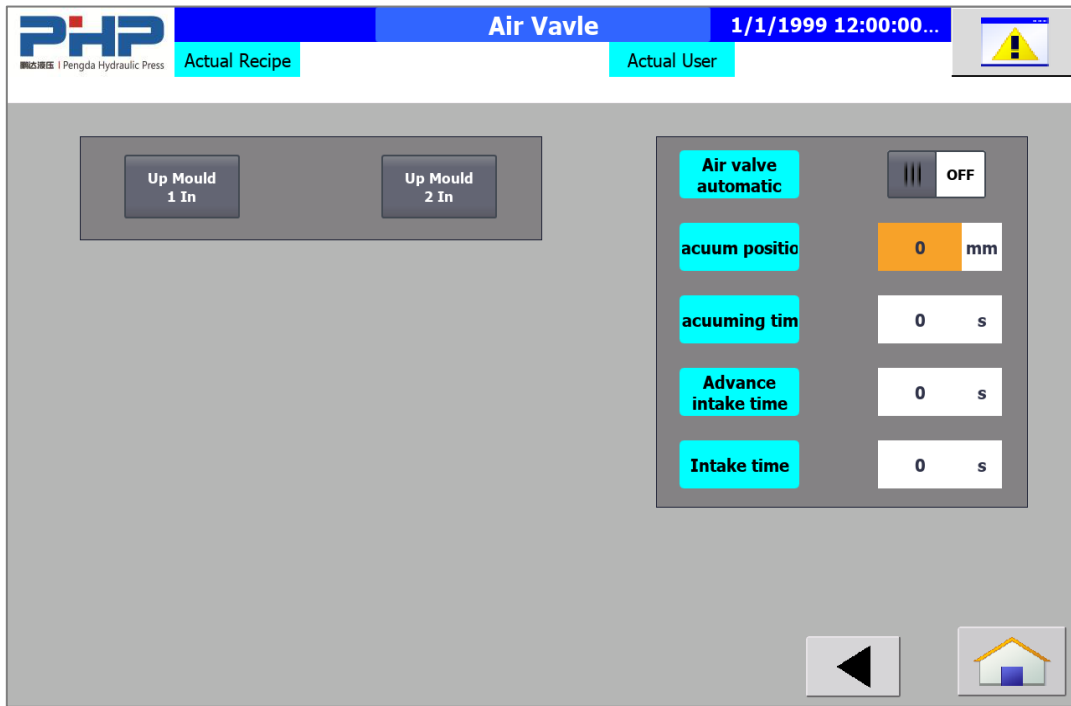
PHP		PLC Output		1/1/1999 12:00:00...											
Actual Recipe		Actual User													
Q0.0-0.7		Q1.0-1.7		Q2.0-2.7		Q3.0-3.7		Q4.0-4.7		Q5.0-5.7		Q6.0-6.7		Q7.0-7.7	
00	1# drive power output	10	YV8	20	YV10	30	YV31	40	Enable output	50	Lock release signal	60	Lubrication pump output	70	Oil cooler start
01	YV1	11	YV9	21	Spare	31	YV32	41	Lock in	51	Locking lock signal	61	Front reset output	71	Vacuum valve
02	YV2	12	Empty	22	Spare	32	YV33	42	Lock back	52	Dangerous operation	62	Front reset indicator output	72	Intake valve
03	YV3	13	Empty	23	YV21	33	YV34	43	Work light output	53	Downward warning output	63	Back reset output	73	Blower
04	YV4	14	Empty	24	YV22	34	YV35	44	Reset output	54	Red light output	64	Back reset indicator output	74	Safety door up
05	YV5	15	Empty	25	YV23	35	YV41	45	Reset indicator output	55	Yellow light output	65	Spare	75	Safety door down
06	YV6	16	Empty	26	YV24	36	YV42	46	Master cylinder home output	56	Green light output	66	Spare	76	Safety Door Emergency
07	YV7	17	Empty	27	YV25	37	YV43	47	Motor start output	57	Buzzer output	67	Oil cooler power	77	Spare

PHP		PLC Input		1/1/1999 12:00:00...											
Actual Recipe		Actual User													
I0.0-0.7		I1.0-1.7		I2.0-2.7		I3.0-3.7		I4.0-4.7		I5.0-5.7		I6.0-6.7		I7.0-7.7	
01	Servo 1 failure	10	Manual up	20	Motor start input	30	Upper limit signal	40	Front operation	50	Back light curtain input	60	Lubrication pump low level	70	Oil cooler failure
01	QF1 feedback input	11	Manual down	21	Motor stop input	31	Lower limit signal	41	Back operation	51	Back light curtain reset	61	Lock In situ 1	71	Front door lower limit signal
02	Brake resistor overheating	12	Adjust input	22	Online input	32	Left door signal	42	Front working 1	52	Spare	62	Lock In situ 2	72	Rear door lower limit signal
03	E-stop	13	Automatic input	23	Robot in safety position input	33	Right door signal	43	Front working 2	53	Spare	63	Spare	73	Spare
04	Rolling shutter E-stop	14	No pressure down	24	Reset input	34	Left release cylinder upper limit	44	Front working 3	54	Spare	64	Spare	74	Spare
05	Low air pressure	15	Loosen the locking structure input	25	Ejection	35	Left release cylinder lower limit	45	Front working 4	55	Spare	65	Spare	75	Spare
06	Low level	16	Empty	26	Return	36	Right release cylinder upper limit	46	Front light curtain input	56	Spare	66	Spare	76	Spare
07	Filter blocked	17	Empty	27	Demoulding cylinder ejection	37	Right release cylinder lower limit	47	Front light curtain reset	57	Spare	67	Spare	77	Spare



✧ 气动功能界面 Pneumatic Function Interface

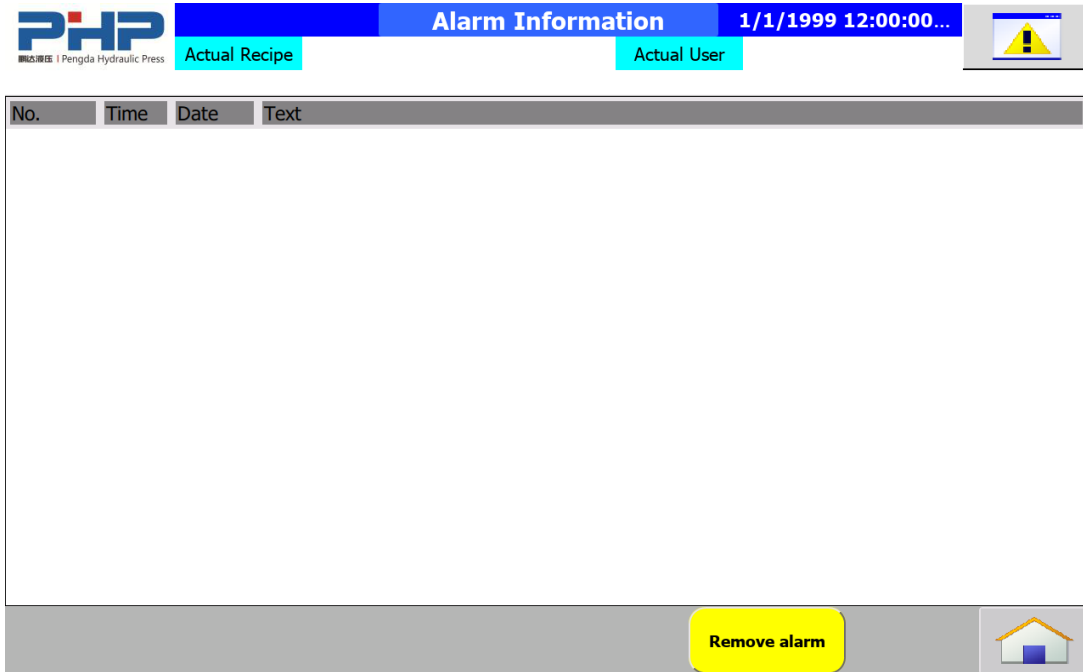
Vacuum function and other pneumatic actions can be set hereto to meet clients' requirements.



✧ Alarm Information Interface

The corresponding warning sign will appear when something goes wrong and the historical information will be displayed.

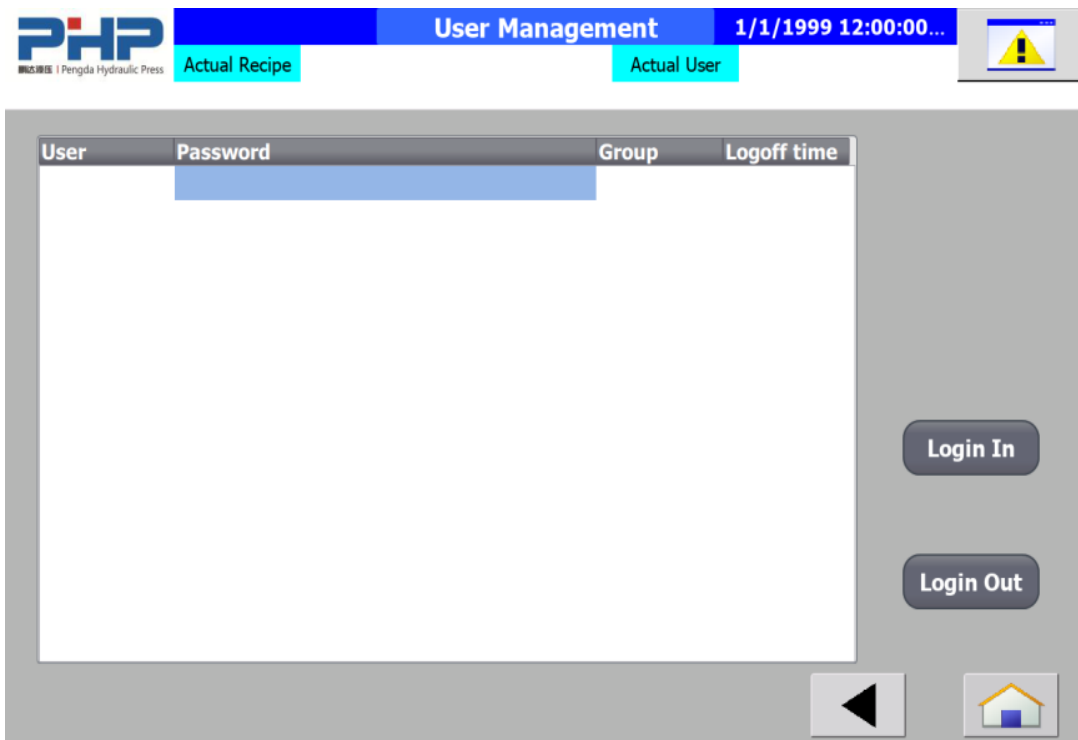




The screenshot shows the 'Alarm Information' interface. At the top left is the PHP logo. The main header is blue with 'Alarm Information' in white. To the right of the header is a timestamp '1/1/1999 12:00:00...' and a warning icon. Below the header are two cyan buttons: 'Actual Recipe' and 'Actual User'. The main content area is a table with columns 'No.', 'Time', 'Date', and 'Text'. The table is currently empty. At the bottom right, there is a yellow 'Remove alarm' button and a home icon.

✧ User Management Interface

The press contains three-level password function and each password has different access right. One can log in and set the password.



The screenshot shows the 'User Management' interface. At the top left is the PHP logo. The main header is blue with 'User Management' in white. To the right of the header is a timestamp '1/1/1999 12:00:00...' and a warning icon. Below the header are two cyan buttons: 'Actual Recipe' and 'Actual User'. The main content area is a table with columns 'User', 'Password', 'Group', and 'Logoff time'. The table is currently empty. On the right side, there are two grey buttons: 'Login In' and 'Login Out'. At the bottom right, there is a back arrow button and a home icon.

